

A person wearing sunglasses and a black dress stands in a doorway, framed by light-colored curtains. The scene is dimly lit, with light streaming in from the doorway behind them.

# *Commemoration*

Exploring the stages of grief through Fashion Design

Meri Malminen

Supervisor: Annamari Vänskä

Advisors: Elina Peltonen, Martina Tiefenthaler

**M2U01419.MPG**

## CV

Meri Malminen (1994)  
Helsinki  
merimalm@gmail.com  
+358 5091 77 696  
@merimalminen

## EDUCATION

Aalto University, Master's Degree, Fashion, Clothing and Textile Design  
2024-

Aalto University, Bachelor's Degree, Department of Design, Fashion  
2017-2021

Salo Regional Vocational College, Clothing Artesan  
2010-2013

## WORK EXPERIENCE

Aalto University, Näytös25, Casting Team and Styling Assistant  
1/2025- 5/2025

Balenciaga, RTW Design Assistant, Paris France  
2022-2024

Aalto University, Fitting Model  
2020-2022

Aalto University, Näytös21 Assistant  
2021

Aalto University, BA2 Menswear Group Collection, Näytös19  
2018-2019

## EXHIBITIONS / PROJECTS

Taideteollinen Näyttely - Copium, Tapiola Keskustorni, Espoo  
10/2025

Helsinki Design Week, A20 Salonkinäytös (Fashion Show)  
9/2025

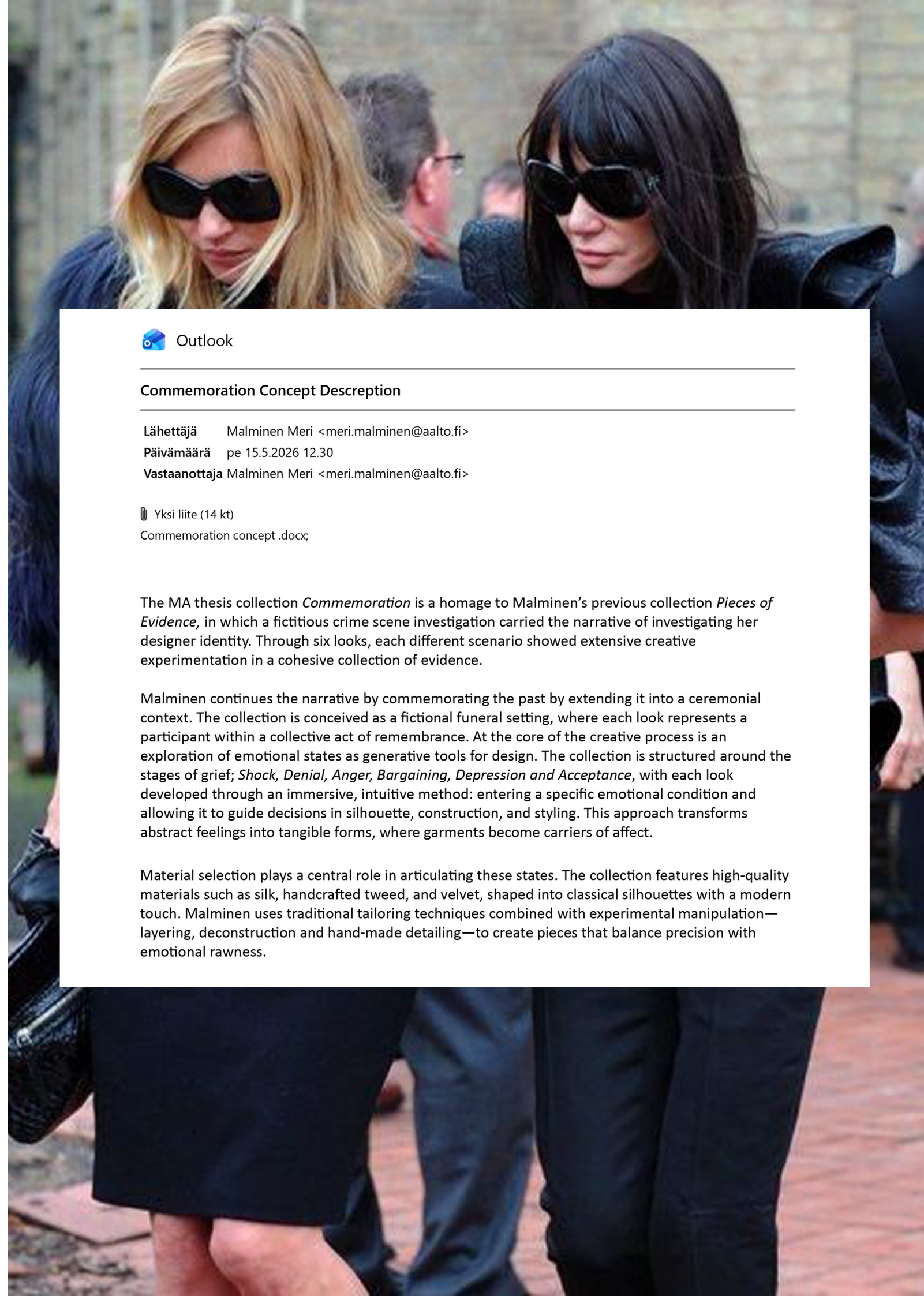
Fashion in Helsinki, Fashion Community Backdrop- Exhibition  
5/2025

Fashion in Helsinki, AmosRex SS25, Fashion Show  
5/2025

TRANSMISSIONS- Balenciaga Museum Project, Getaria Spain  
1/2025

Aalto Fashion Showroom, Institute Finlandaise, Paris France  
2021

Helsinki Design Week, Aalto Fashion 21 vol.2, Glasshouse Helsinki  
2021



Outlook

### Commemoration Concept Description

**Lähetäjä** Malminen Meri <meri.malminen@aalto.fi>

**Päivämäärä** pe 15.5.2026 12.30

**Vastaanottaja** Malminen Meri <meri.malminen@aalto.fi>

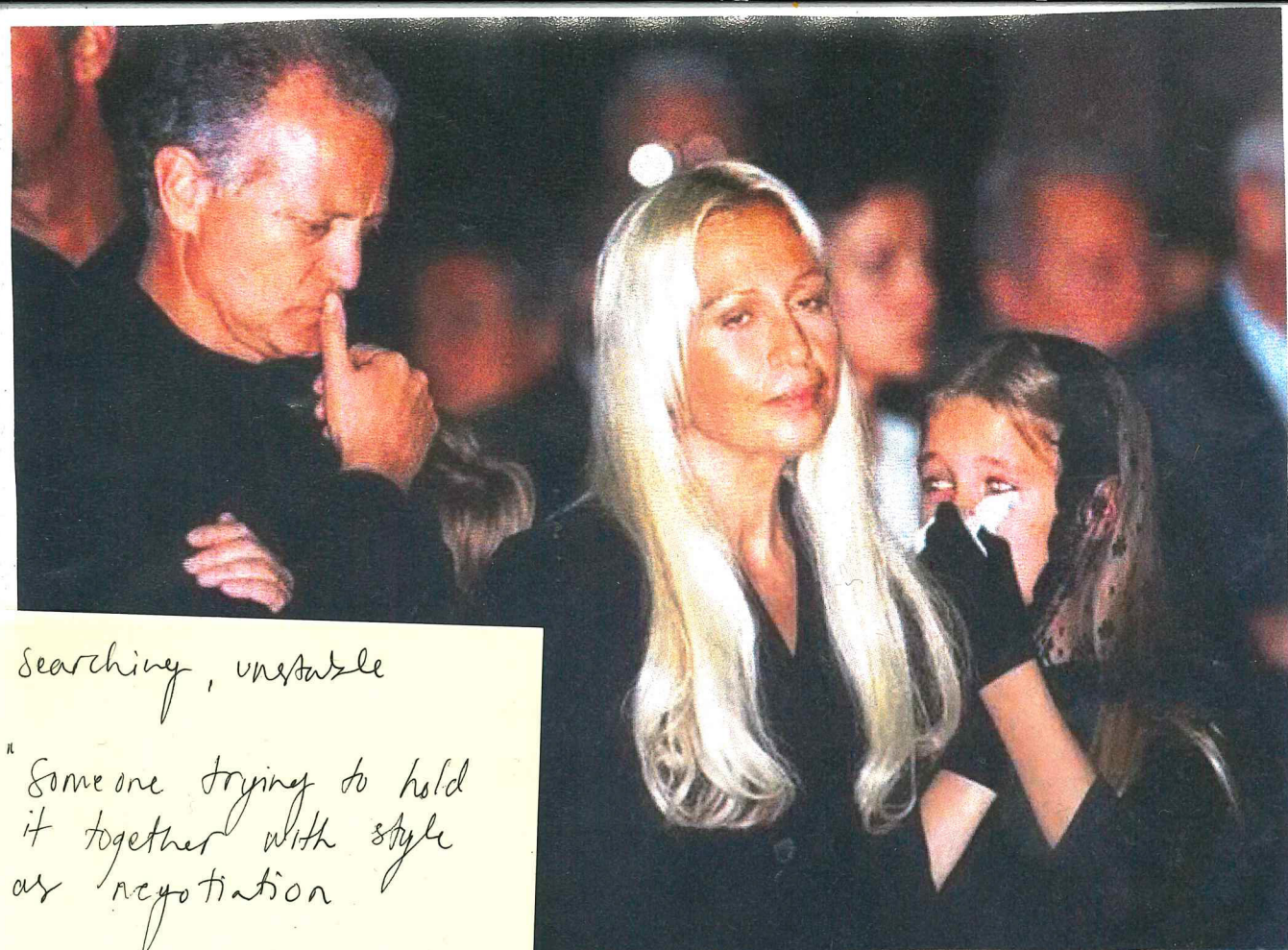
📎 Yksi liite (14 kt)

Commemoration concept .docx;

The MA thesis collection *Commemoration* is a homage to Malminen's previous collection *Pieces of Evidence*, in which a fictitious crime scene investigation carried the narrative of investigating her designer identity. Through six looks, each different scenario showed extensive creative experimentation in a cohesive collection of evidence.

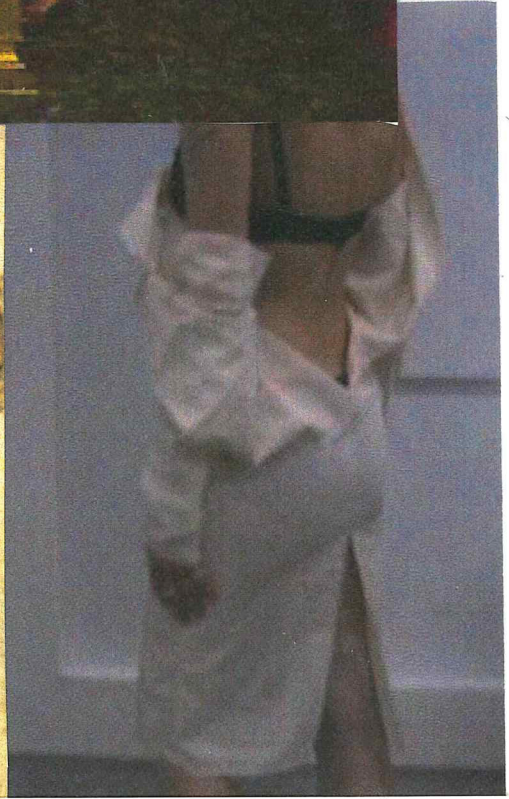
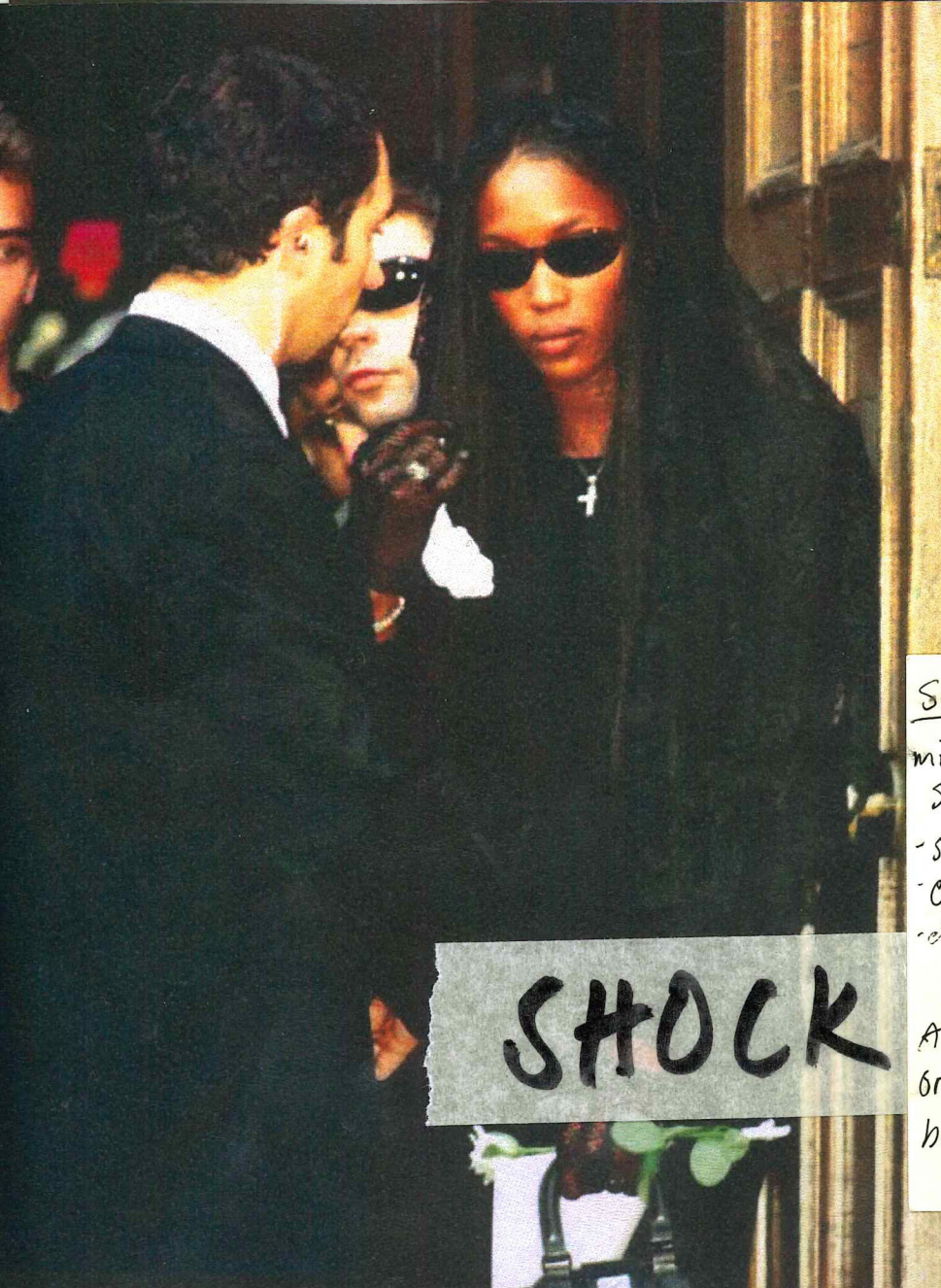
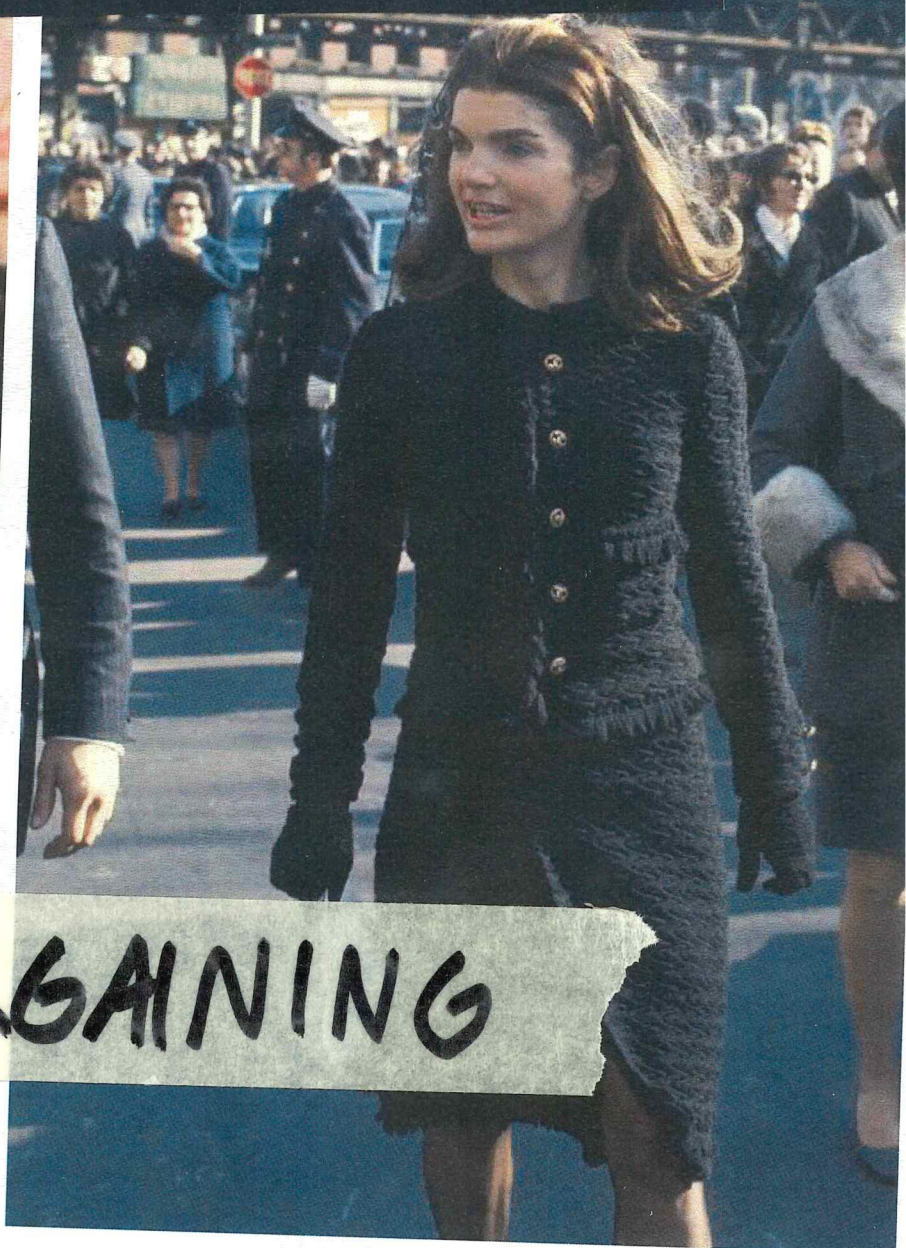
Malminen continues the narrative by commemorating the past by extending it into a ceremonial context. The collection is conceived as a fictional funeral setting, where each look represents a participant within a collective act of remembrance. At the core of the creative process is an exploration of emotional states as generative tools for design. The collection is structured around the stages of grief; *Shock, Denial, Anger, Bargaining, Depression and Acceptance*, with each look developed through an immersive, intuitive method: entering a specific emotional condition and allowing it to guide decisions in silhouette, construction, and styling. This approach transforms abstract feelings into tangible forms, where garments become carriers of affect.

Material selection plays a central role in articulating these states. The collection features high-quality materials such as silk, handcrafted tweed, and velvet, shaped into classical silhouettes with a modern touch. Malminen uses traditional tailoring techniques combined with experimental manipulation—layering, deconstruction and hand-made detailing—to create pieces that balance precision with emotional rawness.



searching, unstable  
"Someone trying to hold it together with style as negotiation"

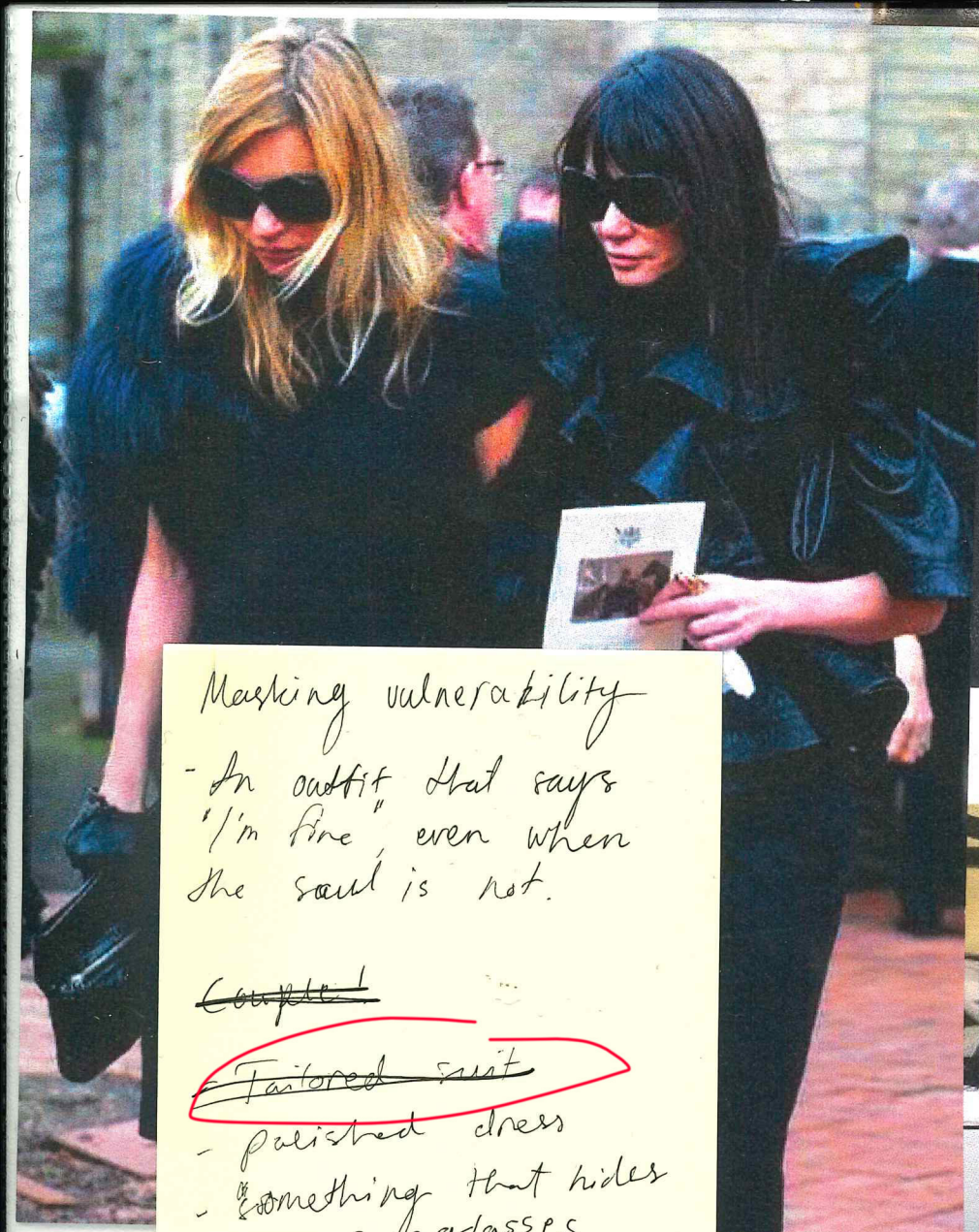
Bargaining  
hope and desperation:  
you're trying to find a way to avoid the painful reality of the situation by "making a deal"  
Impatience and urgency  
you might feel an immediate need to close a deal which can lead to making rash decisions.



Shock  
mix of emotional and physical sensations  
-sense of unreality  
-emotional numbness  
-difficulty to think clearly  
A sense of being detached or disconnected from your body and surroundings

**SHOCK**

**BARGAINING**



Masking vulnerability

- In outfit that says "I'm fine" even when the soul is not.

~~Closet~~

Tailored suit

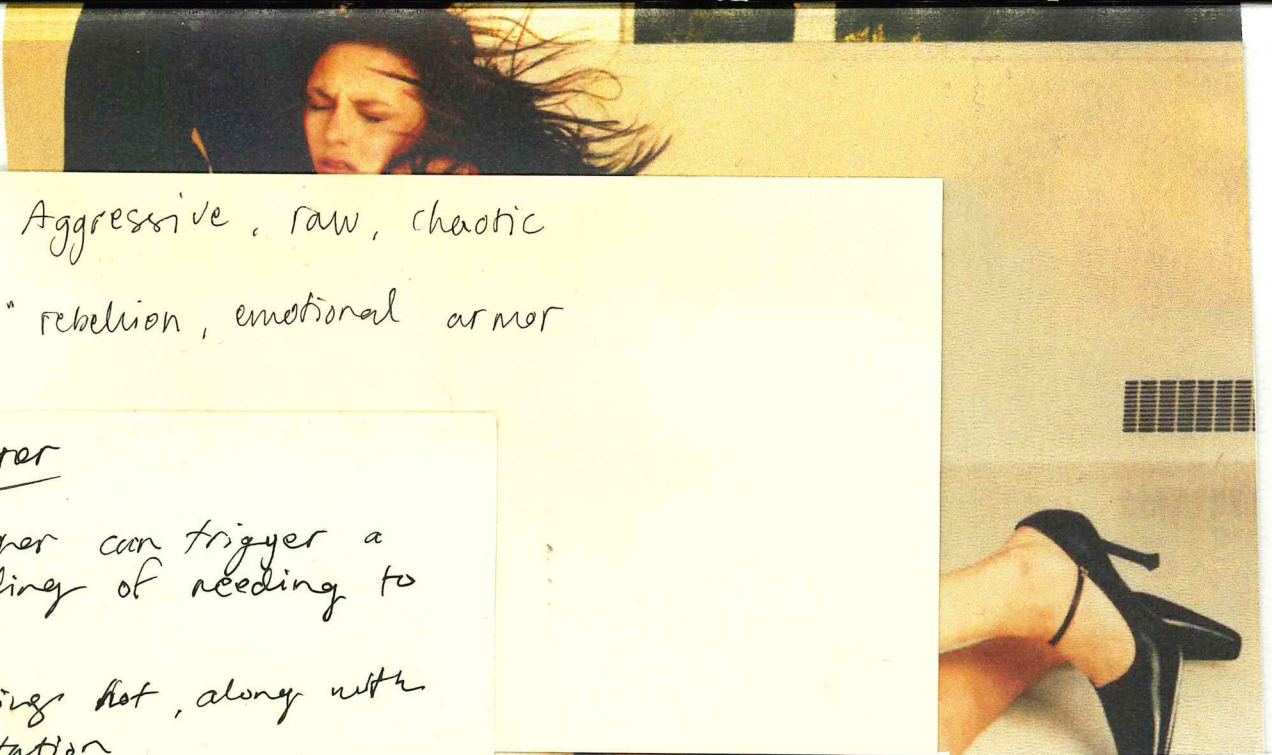
- polished dress
- something that hides
- sunglasses

### Denial

defense mechanism to avoid uncomfortable truths or painful emotions.

Feelings of being stuck  
sense of hopelessness  
loss of control

**DENIAL**



Aggressive, raw, chaotic  
"rebellion, emotional armor"

### Anger

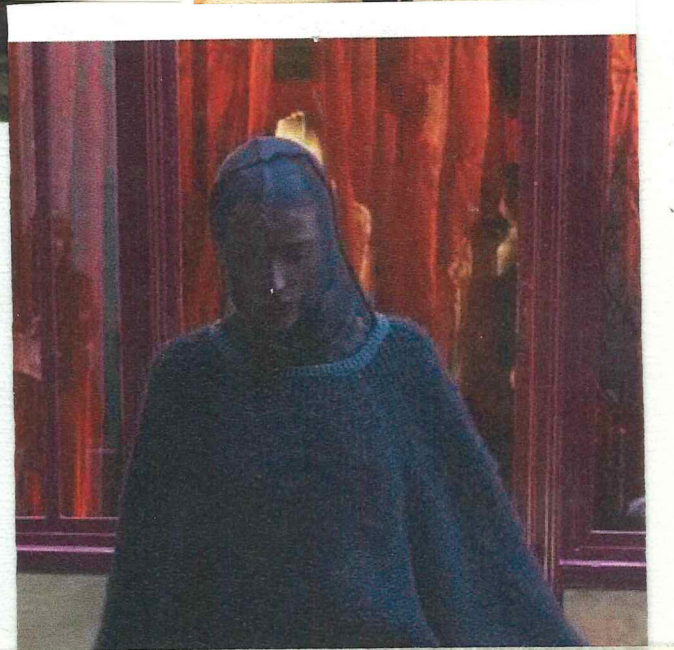
Anger can trigger a feeling of needing to act

feeling hot, along with irritation

loss of control



**ANGER**



**DEPRESSION**

### Depression

collapsed, muted, heavy

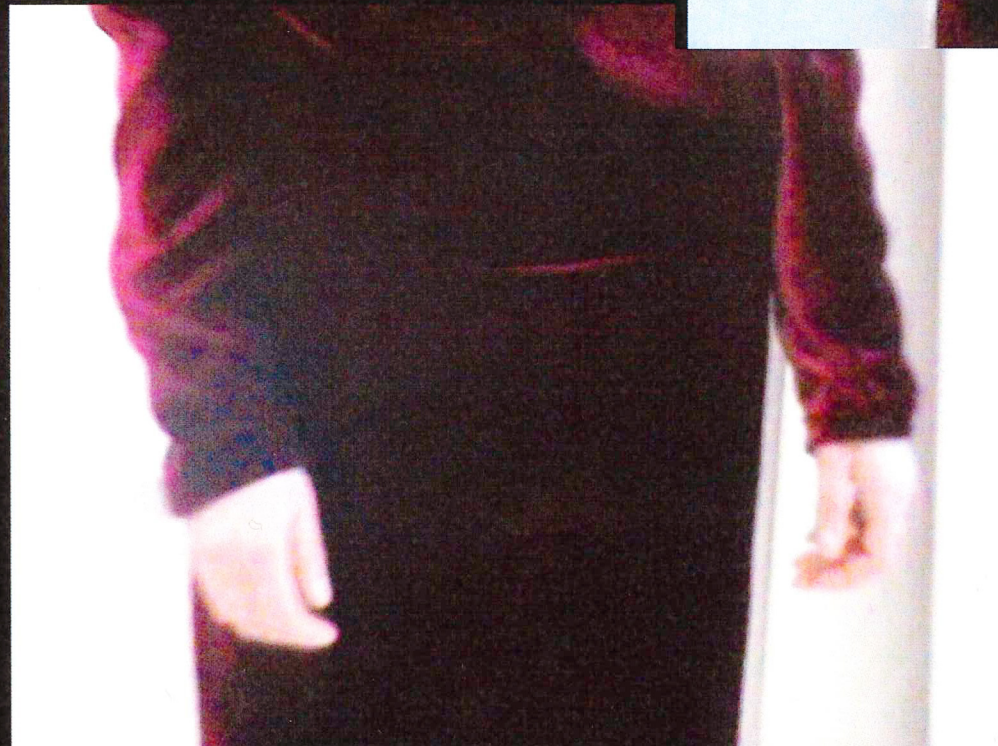
"Garments that look like they're hugging you or weighing you down"

roikawat sukla-kawad !!!

n vertolun



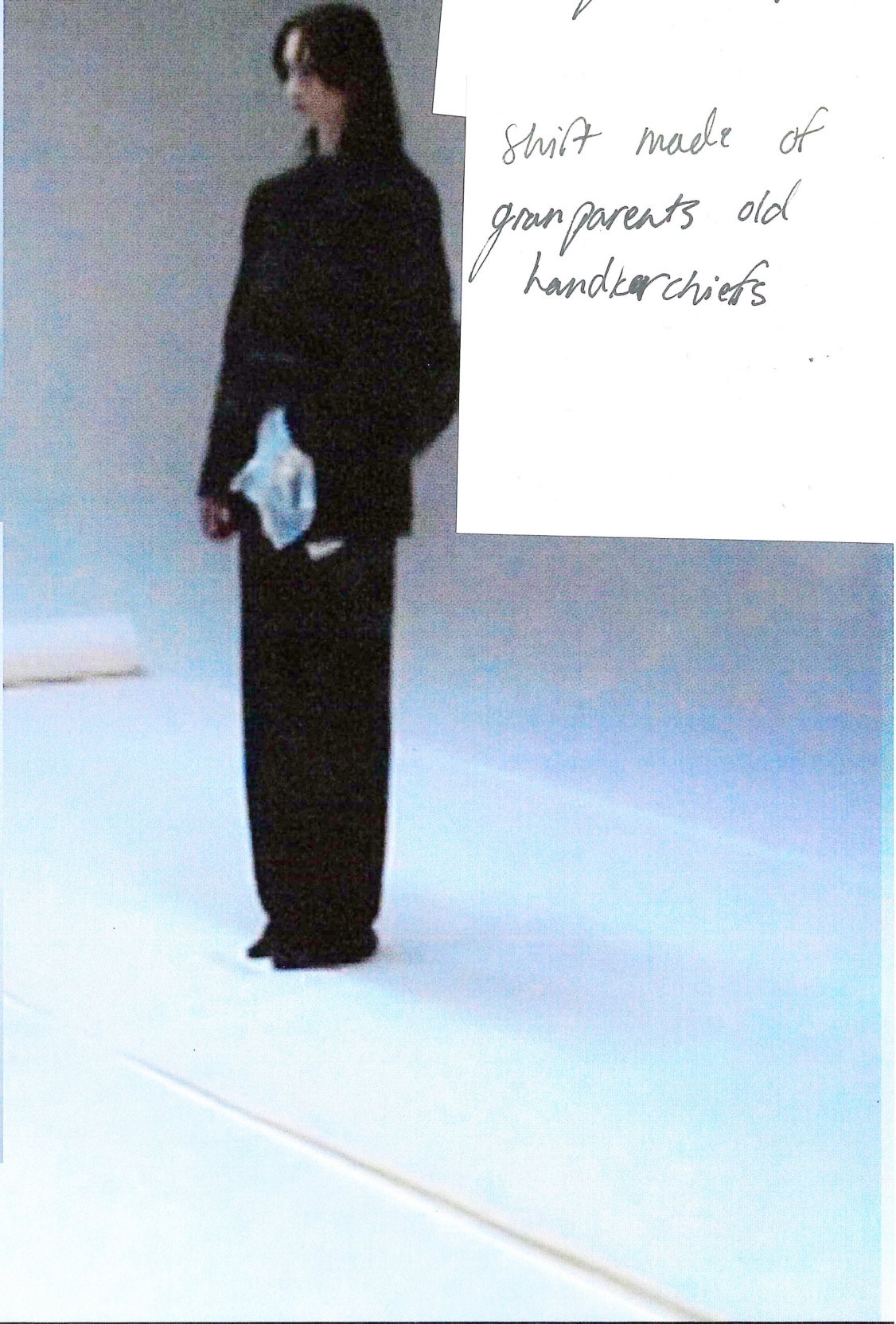
*Silk velvet  
Self dyed  
Colour*



M2U01430.MPG

viscose jacquard suit  
hand tailored  
using traditional  
tailoring techniques

shirt made of  
grandparents old  
handkerchiefs





fake chinchilla fur  
treated with hairgel

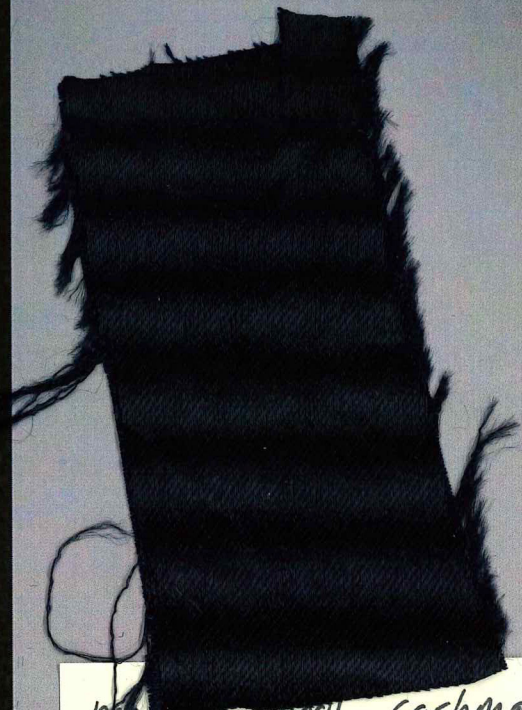




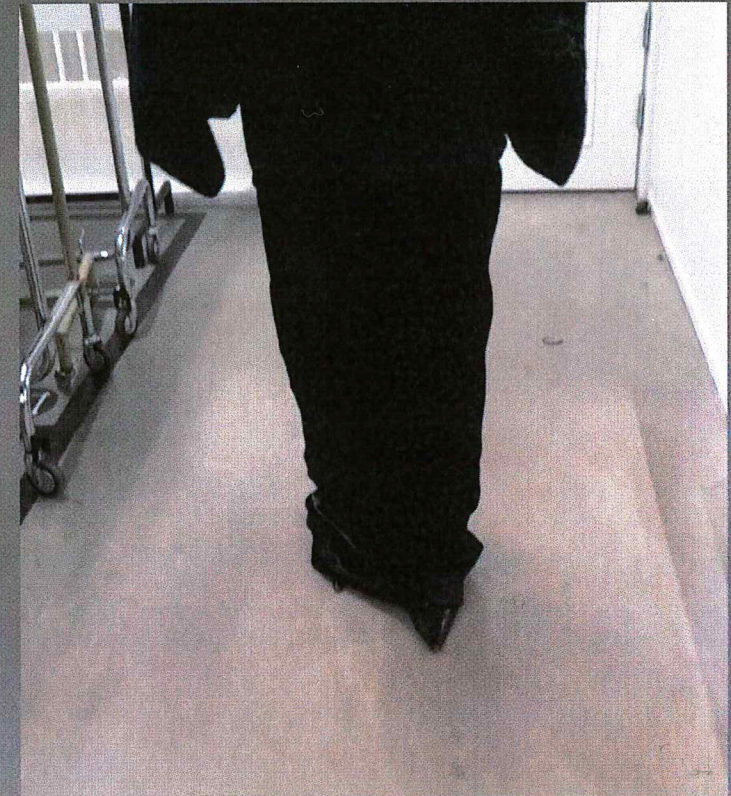
M2U01417.MPG

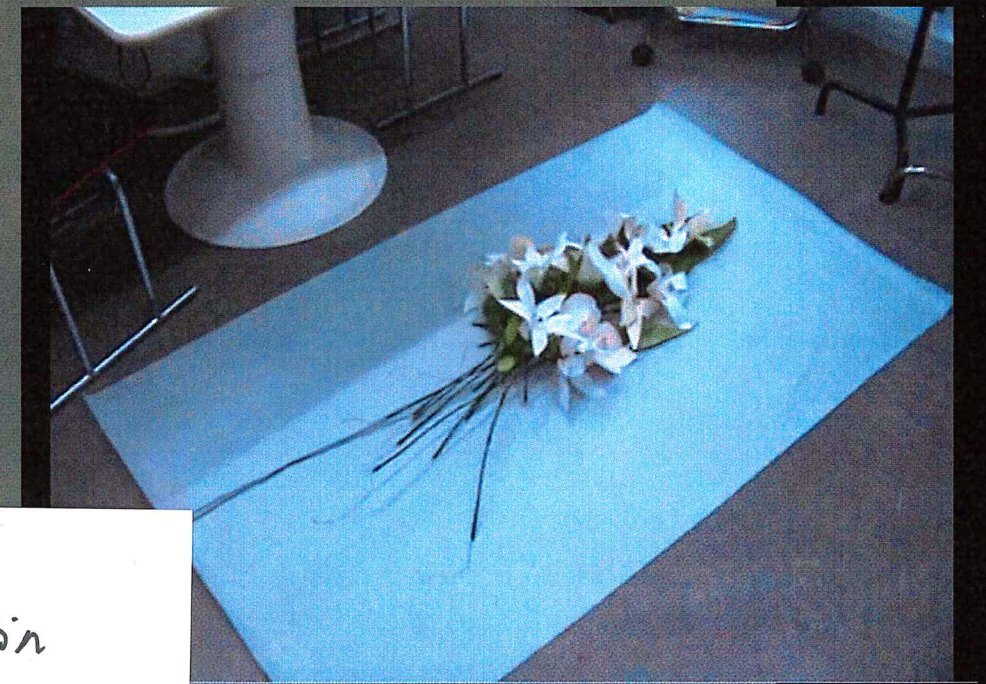
hand weaved yarns  
3 different ones  
twin set jacket & skirt





Merino wool, cashmere  
hand knitted knit  
self dyed satin viscose  
skirt!





hand crafted  
silk and satin  
flowers  
lilies and orchids



M2U01437.MPG

M2U01413.MPG