

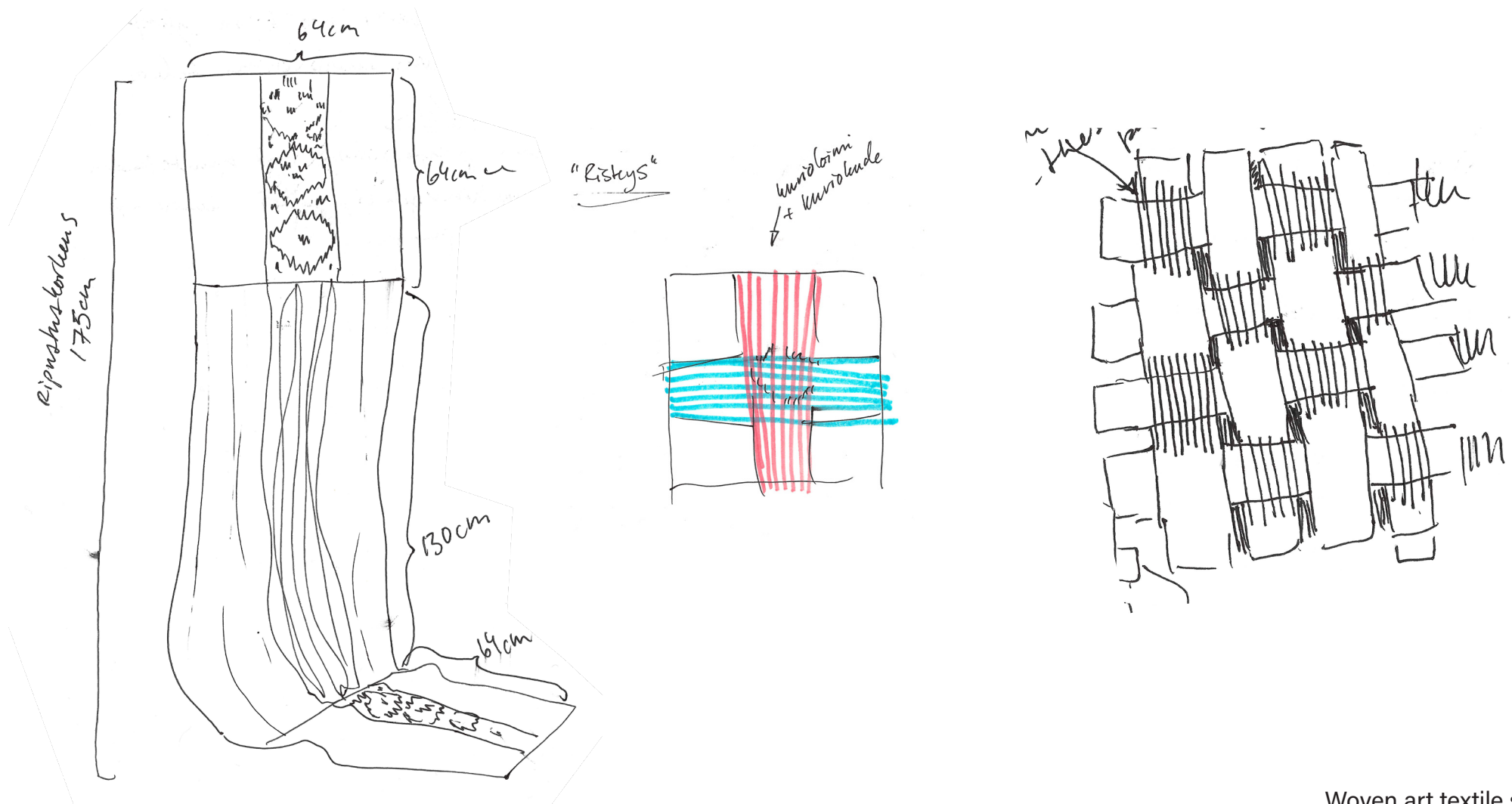
# PROJECT PORTFOLIO

RIIKKA LAAKSOHARJU  
TEXTILE DESIGNER

*[r.t.laaksoharju@gmail.com](mailto:r.t.laaksoharju@gmail.com)*

*[www.rtlaaksoharju.net](http://www.rtlaaksoharju.net)*

# STEP UP TO AN EMPTY TABLE



2026

Woven art textile series

Tie/Path - 66cmx225cm, Linen doobby weave

Risteys/Crossing - 66cm x 66 cm, Linen doobby weave

Kivijalka/Foundation - 110cm x 110cm, Linen and wool Jacquard weave

# TIE/PATH



Image: Kristian Presnal 2026

2026  
Tie/Path  
Dobby woven art textile  
66cm x 225cm  
Vintage linen threads on a  
custom overshot pattern warp

# RISTEYS/CROSSING



Image: Kristian Presnal 2026

2026  
Risteys/Crossing  
Dobby woven art textile  
66cm x 66cm  
Vintage linen threads on a  
custom overshot pattern warp

# KIVIJALKA/FOUNDATION



Image: Kristian Presnal 2026

2026  
Kivijalka/Foundation  
Jacquard woven art textile  
110cmx110cm  
Vintage linen and cotton  
threads on a wool warp



*Young crafters and a weavers become the receivers of an inheritance that no-one else wanted.  
Looms, spinning wheels, linen table cloths and heirloom lace dollies  
have no space in most contemporary lives and homes.  
Family textile heritages have been stored in attics for 60 years.  
Taking it up comes with a strange grief of stepping up to a  
banquet table long after the celebration is over.*

Master's Thesis project Spring 2026 at Aalto University  
Name of Thesis: Koko kudelman – kudotun tekstiilin osatekijät luovassa ilmaisussa.  
Photography: Kristian Presnal

# MACHINA / CORPUS

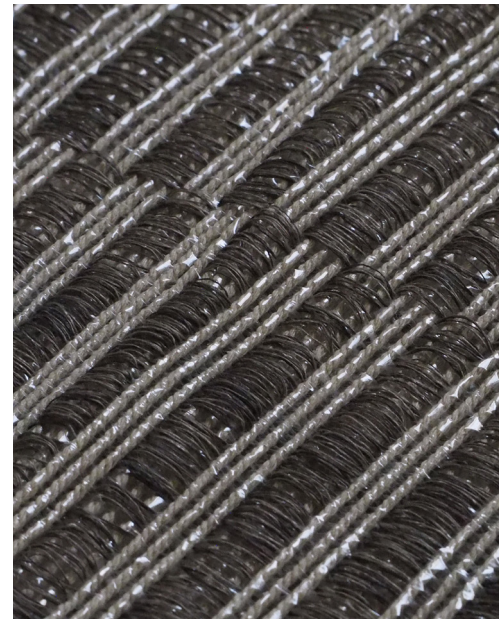


Image: Venla Elonsalo 2024

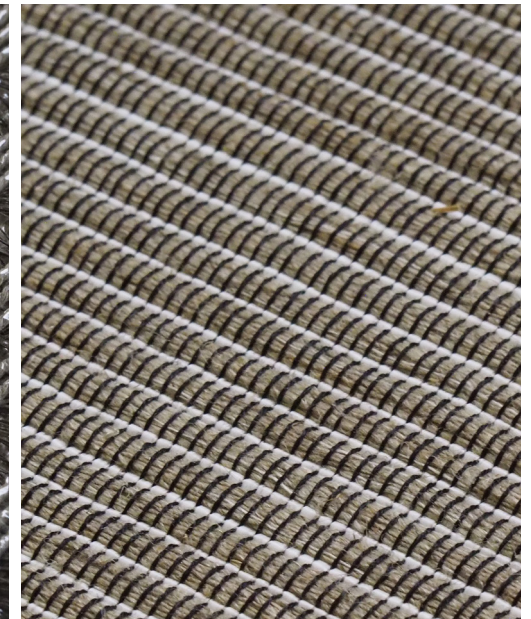
2024  
Conceptual woven twin collections  
Machina & Corpus  
Handwoven samples on shaft- &  
dobby looms

*As a weaver operating a traditional countermarch loom I step into a machine and become an integral part of it. Countermarch looms do not operate without a human body. I become a lever and extend the power of the machine - together we partake in the act of creation.*

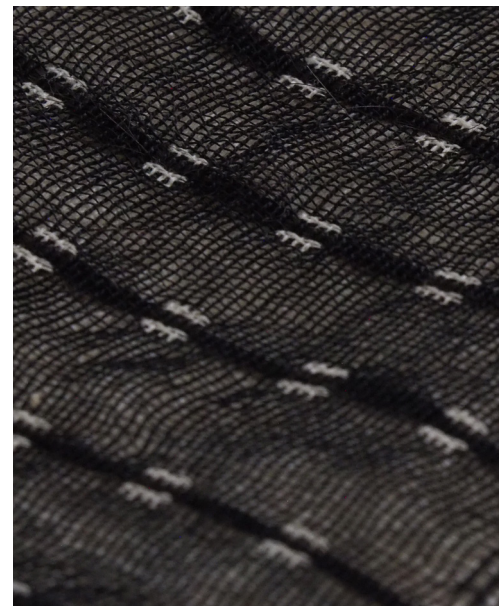
Machina and Corpus are woven twin collections created for Woven Fabrics Studio course at Aalto University in Autumn 2024 and displayed at Väre FK Lobby as part of a Experimental Textile Design-exhibition



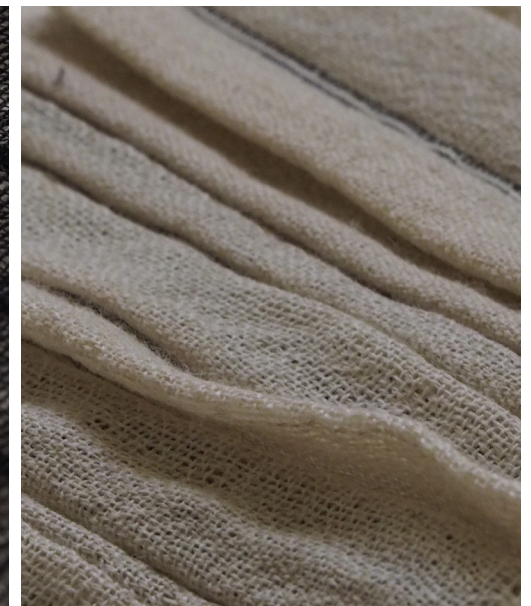
*HARVESTER / MACHINA  
Weft: Linen, PA tape  
Warp: Cotton twine*



*CORE MEMORY / MACHINA  
Weft: Linen  
Warp: PA tape, spiral yarn*



*RELIQUARY / CORPUS  
Weft: Black and white wool, human hair  
Warp: Black cotton, white wool*



*HILLS AND VALLEYS / CORPUS  
Weft: Paper core yarn, alpaca wool  
Warp: Black cotton, white wool*



*OIL AND SMOKE / MACHINA*  
Weft: Linen-cotton blend, PVA yarn  
Warp: Cotton twine



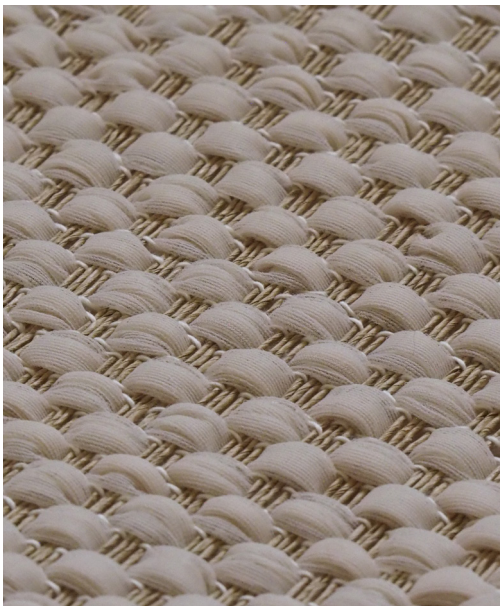
*BRUSHED STEEL / MACHINA*  
Weft: Aluminium wire  
Warp: Silk



*CLANG, BOOM, STEAM / MACHINA*  
Weft: Black merino wool and linen  
Warp: Black wool and linen



*WIREFRAME / MACHINA*  
Weft: Linen and PA monofilament  
Warp: White spiral yarn, PA monofilament



*SHEER TIGHTS / CORPUS*  
Weft: Mesh tape yarn, Paper core yarn  
Warp: Paper yarn



*GROWING PAINS / CORPUS*  
Weft: Mesh tape yarn, Wool  
Warp: Wool and cotton



*EPIDERMIS / CORPUS*  
Weft: Hand-spun raw wool  
Warp: Cotton twine



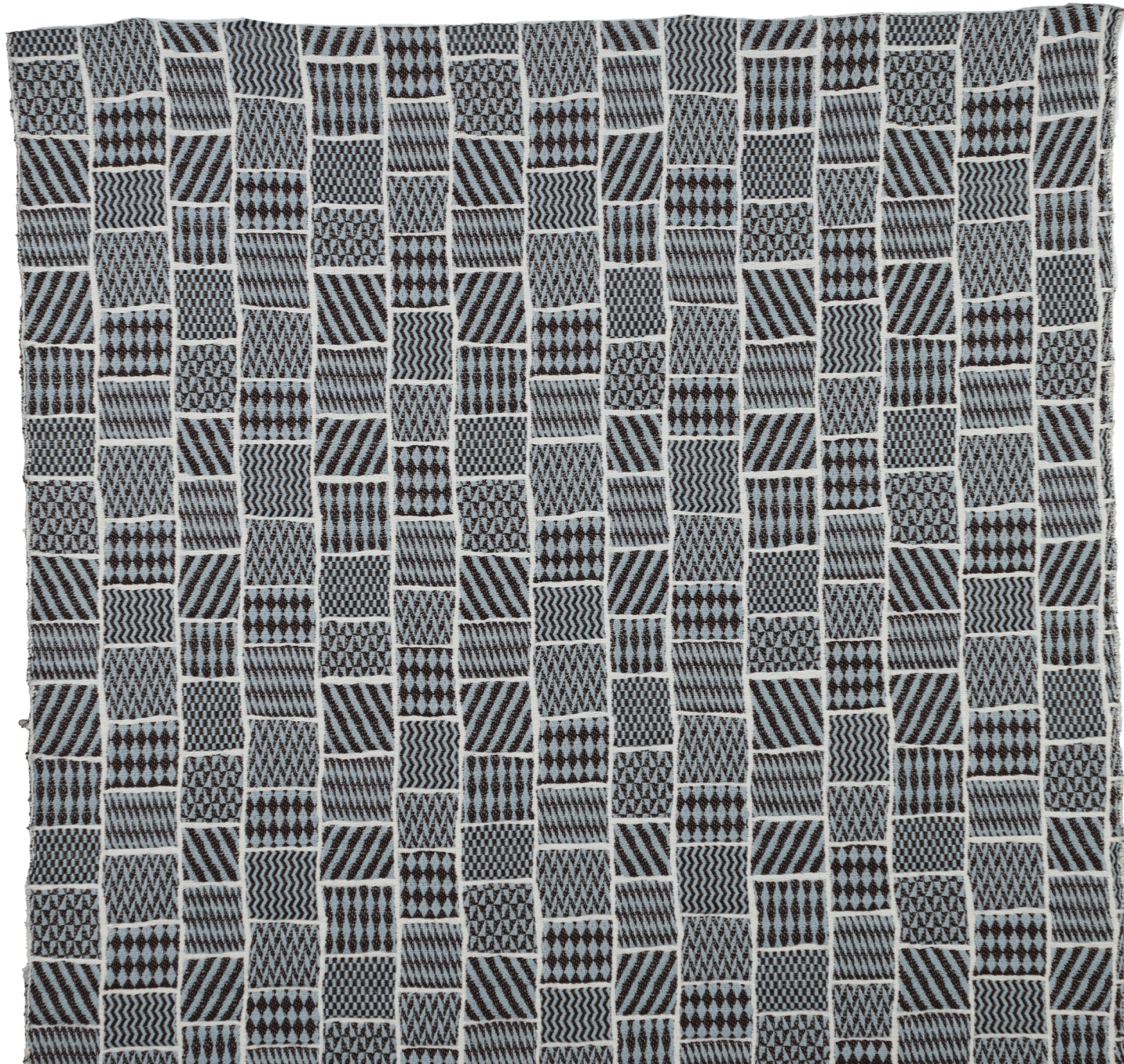
*RIB CAGE / CORPUS*  
Weft: Cotton tape, cotton thread, linen  
Warp: White spiral yarn, PA monofilament

# PATTERNLAB 2025



2025  
Surface pattern designs  
for a customer (SOK)  
Rotary and digital print  
Designer and a project lead

# EXCELLENCE AND DESPAIR



2025  
Excellence and despair  
Conceptual interior fabric collection  
Jacquard & Dobby woven fabrics



Excellence and Despair is a conceptual interior textile collection that consists of 2 handwoven dobby fabrics, 2 handwoven jacquard fabrics, and one industrially woven jacquard fabric. Each fabric has been designed to fit in a living room setting, to be used as a upholstery fabric, decorative pillow, throw blanket and a curtain.

Collection was a coursework for Advanced Woven Fabrics workshop at Aalto University and displayed in Väre Lobby Gallery in Spring 2025

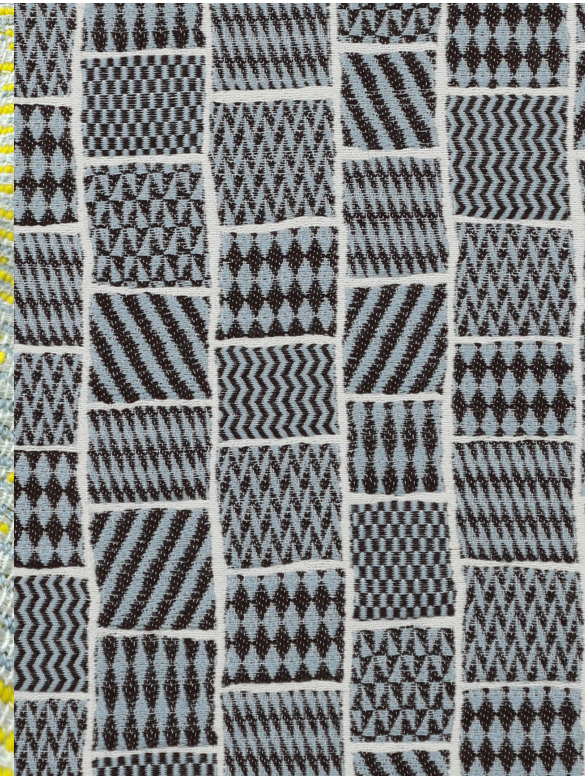
*Images left to right*  
1. *Hiding my nature - linen, Jacquard double weave*

2. *Keep reaching up - silk, linen and wool, Dobby double weave.*

3. *Looking for patterns - wool and cotton, Dobby sateen with overshoot warp.*

4. *10 tikkua - wool, cotton and ten-cel, Jacquard 3 weft system.*

5. *Sorting the chaos - wool, Jacquard 3 weft system double weave.*



# LAMPAASTA / OF SHEEP

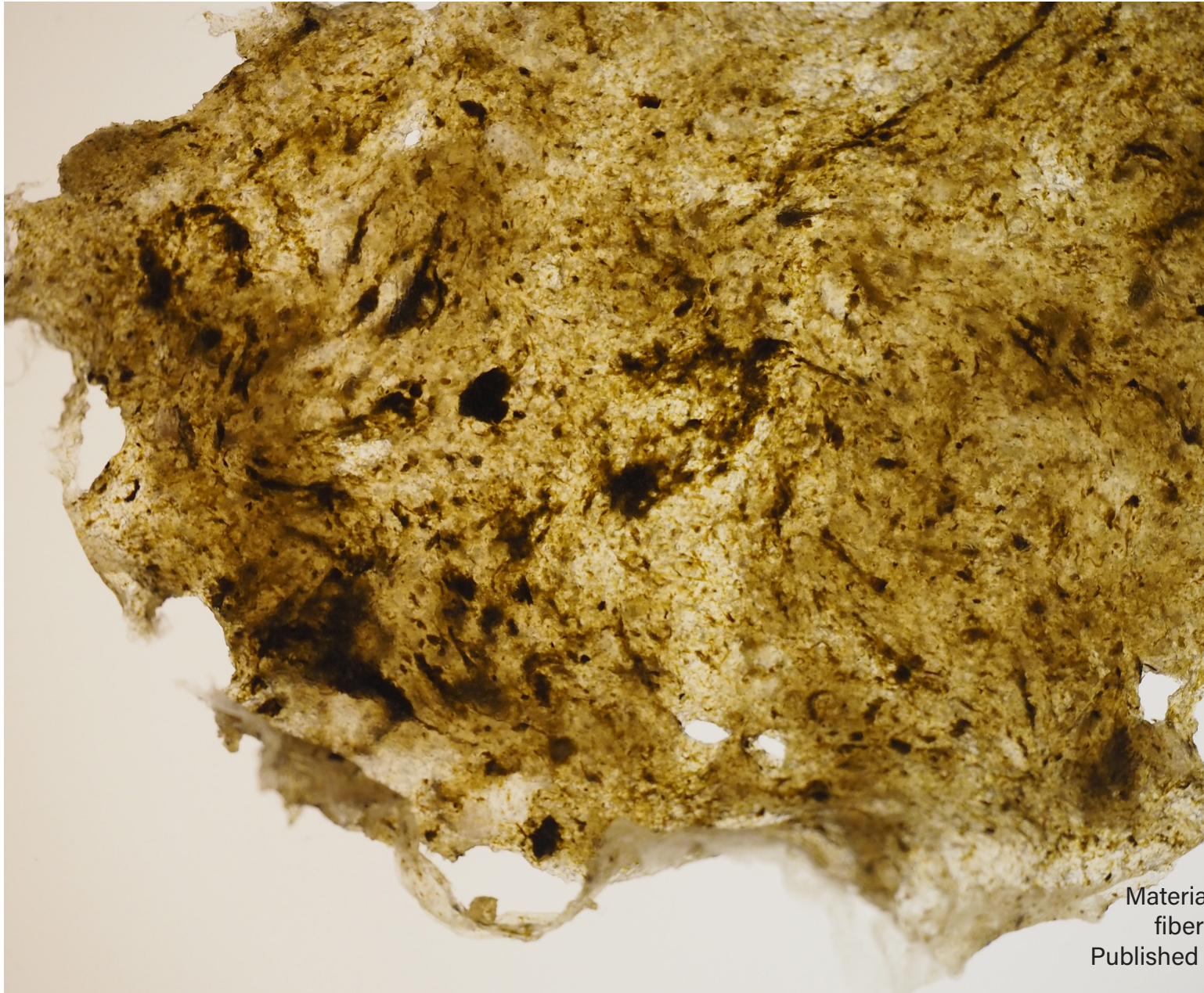


Lampaasta / Of Sheep

Woven rya tapestry 2022  
Wool from Kainuu Grey heritage sheep breed,  
recycled wool, recycled cotton  
110 cm x 72 cm

Exhibited at Young Textile Art Triennial 2022  
in Lodz, Poland.

# RE-THINK POTATO



2021  
ReThink Potato  
Innovation project  
Material samples (paper, bioplastic, dye, and  
fiber) using potato stalk as a raw material.  
Published as an E-publication under Metropolia  
Taito publication series in 2023